

B.F. Day Playground Improvement Project

New play equipment on the B.F. Day Elementary School playground will be a wonderful resource for the entire community. We are looking to receive input on that play equipment from students, staff, families, neighbors and community members.

A request for proposals was sent to all Seattle School District approved playground equipment vendors. The B.F. Day PTSA/ Playground Project Team received eight proposals. The Review Team scored those proposals, narrowing the options down to the three options presented below.

This new play area will be installed on the west side of the school, in the area of the existing upper/north basketball court. The new play area will also include adjacent embankment slides (slides depicted in site plans). New free game goals/hoops will also be installed in the existing south/lower basketball court.

We need your input on the play equipment. After reviewing the three options presented in this PDF, please click the survey link below and choose your preferred option.

Note: Do not select an option because of color – colors may change.

Table of Contents

Page 2 - 3 : AllPlay/Playcraft Systems

Page 4 - 5 : PlayCreation Option A

Page 6 - 7 : PlayCreation Option B

[Survey Link - Click Here](#)

Please note : The proposed PlayCreation embankment slide design be will modified if one of these options are chosen. Per Seattle School District standards, double slides must be adjacent.

Thank you for your input – it is one of the many criteria considered in the final selection.

R⁵

For Kids
AGES
5-12

PROJECT # 78284A - Site



Front Perspective



IMPORTANT: The colors shown are for illustration purposes only. Actual colors may vary. Contact your Playcraft Rep for accurate color samples.



CUSTOM ROUND-5 MODULAR PLAYSYSTEM

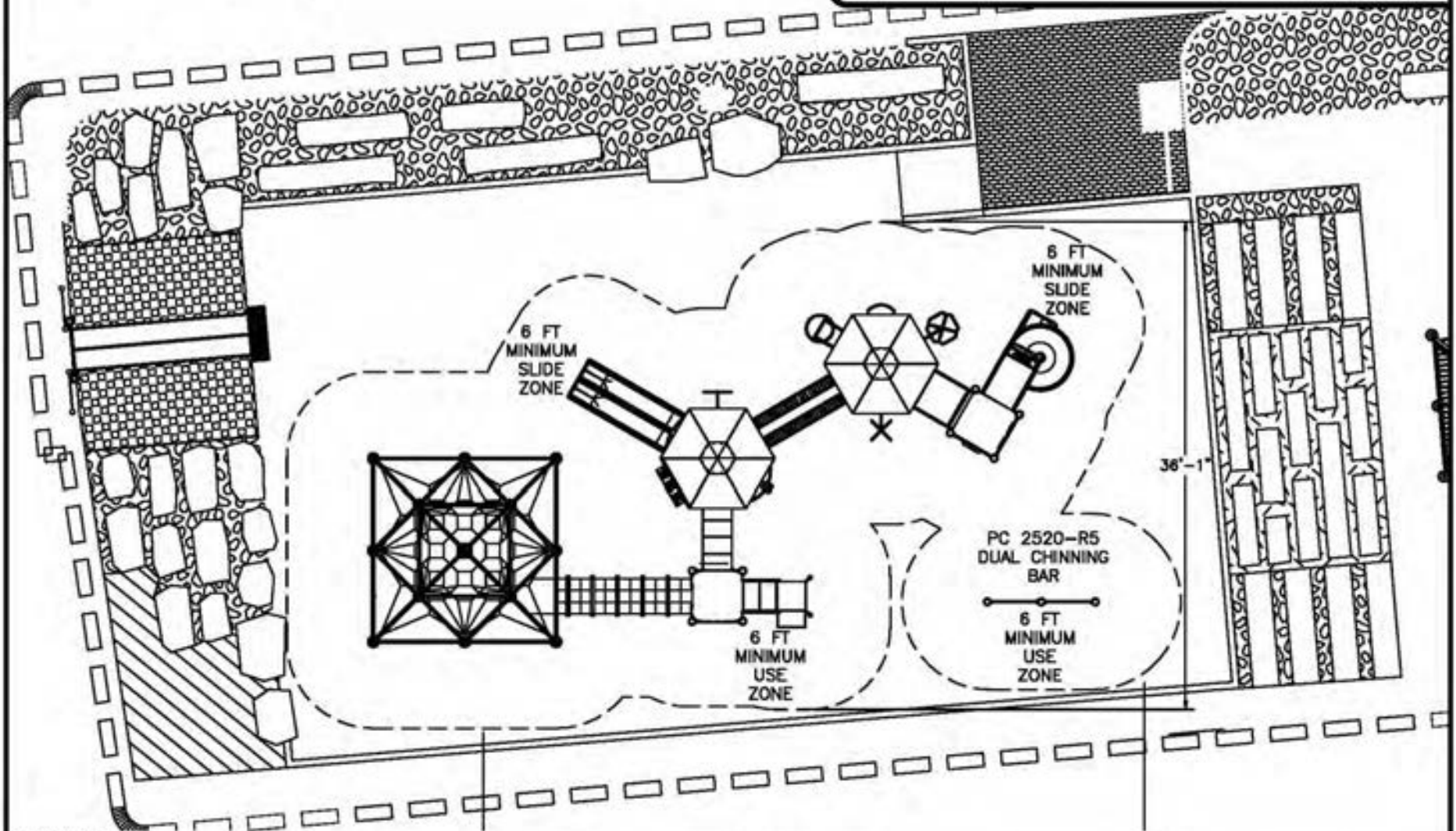
Site Plan (Preliminary)

ADA ACCESSIBILITY GUIDELINE - ADAAG CONFORMANCE:

THIS DESIGN WILL MEET ADAAG AND ASTM F 1487-11 REQUIREMENTS FOR ACCESS WITH THE ADDITION OF 2 GROUND LEVEL EVENTS (1 TYPE) WHEN PROPERLY INSTALLED OVER ACCESSIBLE SURFACING.

ELEVATED	ACCESSIBLE	RAMP ACCESSIBLE	GROUND	TYPES
11	11/5	0/0	3/4	3/3

FOR KIDS
AGES
5-12



GENERAL NOTES:

- THE SITE PLAN SHOWN IS BASED ON MEASUREMENTS THAT WERE PROVIDED TO KRAUSS CRAFT, INC. AT THE TIME OF THE PROPOSAL REQUEST. ALL DIMENSIONS MUST BE VERIFIED PRIOR TO THE SUBMISSION OF A PURCHASE ORDER. KRAUSS CRAFT, INC. WILL NOT BE RESPONSIBLE FOR ANY DISCREPANCIES BETWEEN ACTUAL DIMENSIONS AND DIMENSIONS SUBMITTED ON A PROPOSAL REQUEST.
- THE MINIMUM USE ZONE FOR THE PLAY STRUCTURE IS BASED ON THE PRODUCT DESIGN AT THE TIME OF THE PROPOSAL. COMPONENTS AND STRUCTURE DESIGN MAY BE SUBJECT TO CHANGE WHICH MAY AFFECT DIMENSIONS, THEREFORE, BEFORE PREPARING SITE, WE STRONGLY RECOMMEND OBTAINING FINAL DRAWINGS FROM THE FACTORY (AVAILABLE AFTER THE ORDER IS PLACED AND INCLUDED IN THE ASSEMBLY MANUAL.)
- **WARNING:** ACCESSIBLE SAFETY SURFACING MATERIAL IS REQUIRED BENEATH AND AROUND THIS EQUIPMENT THAT HAS A CRITICAL HEIGHT VALUE (FALL HEIGHT) APPROPRIATE FOR THE HIGHEST ACCESSIBLE PART OF THIS EQUIPMENT. REFER TO THE CPSC'S HANDBOOK FOR PUBLIC PLAYGROUND SAFETY, SECTION 4, SURFACING.

PR#: 78284A
Date: 05/17/13
Drawn By: JRW

B.F. DAY ELEMENTARY SCHOOL
AllPlay Systems

Scale: 3/32" = 1'-0"



Lowers Play Area at B.F. Day Elementary | Option A



SLM
landscape
structures®



**Better playgrounds.
Better world.™**

playlsi.com

Proudly presented by:
John Mullan



PLAY*CREATION

dreams start on the playground.

Lowers Play Area

at B.F. Day Elementary | Option B



SLM
landscape
structures®



Better playgrounds.
Better world.™

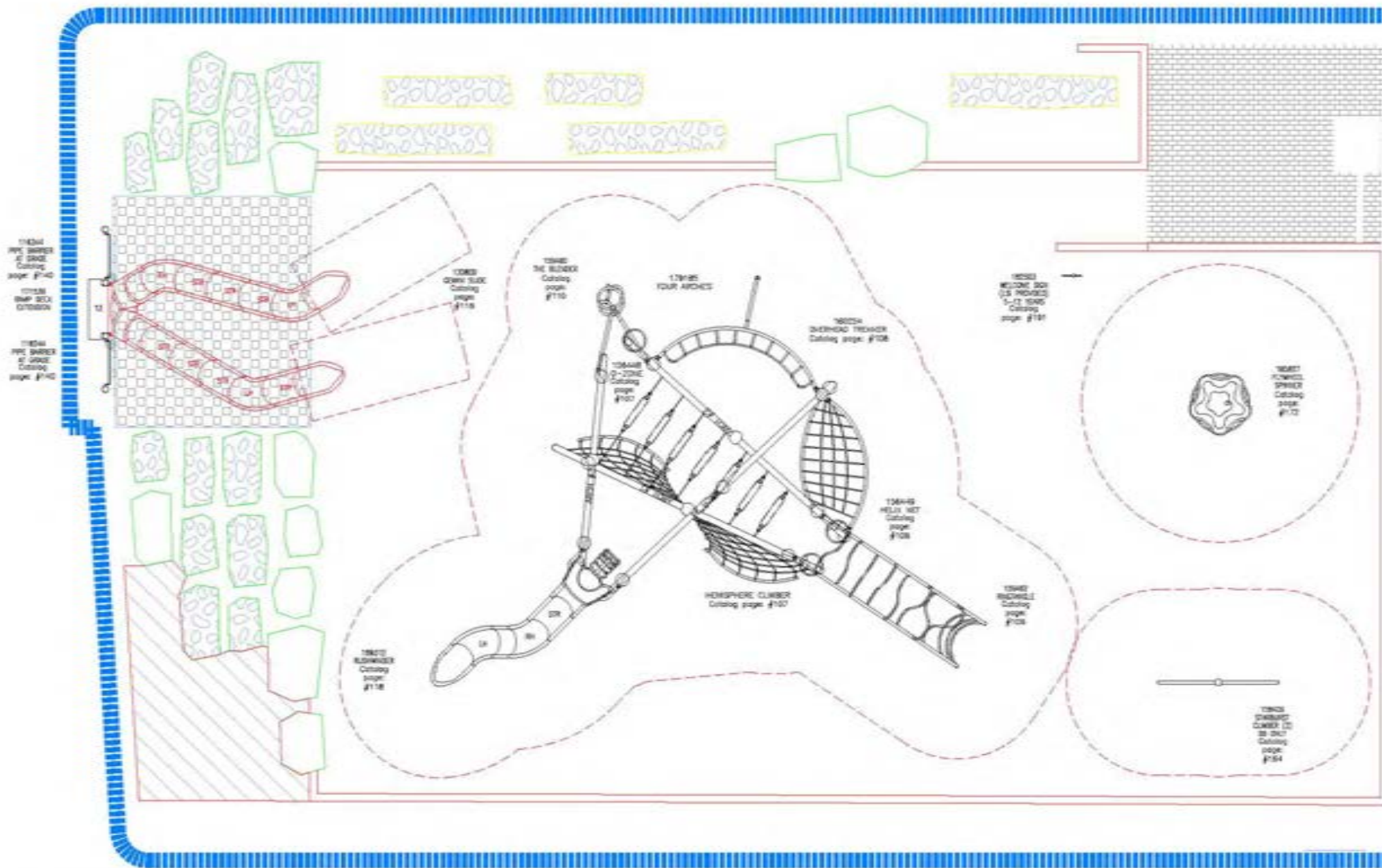
playlsi.com

Proudly presented by:
John Mullan



PLAY*CREATION

dreams start on the playground.



SCALE IN FEET:

